

Lantelme, Kurens & Associates, PC

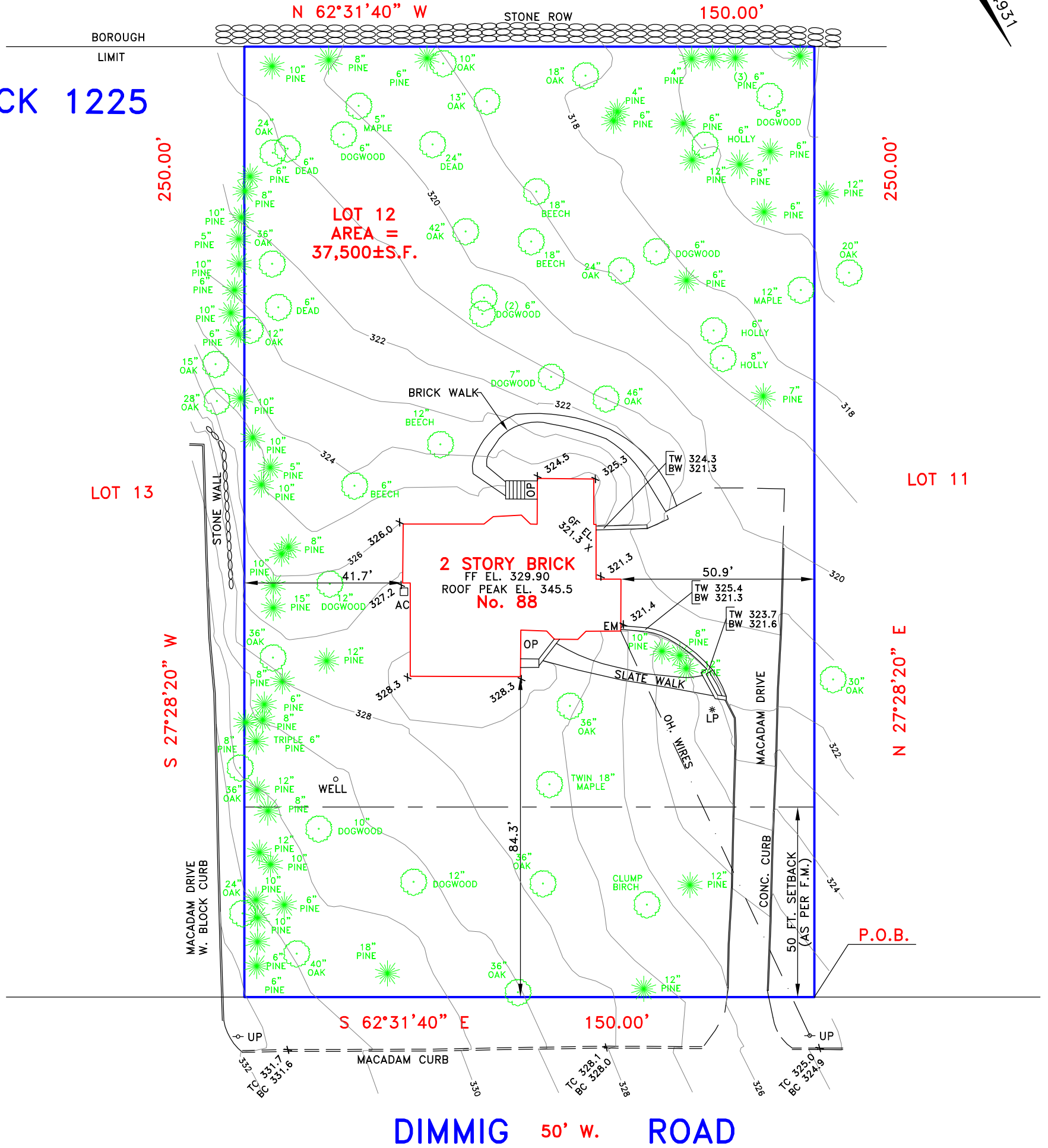
Engineers & Surveyors

101 West Street, Hillsdale, N.J. 07642 Ph. 201-666-2450 Fax 201-666-9745

FILE MAP No. 4931

BOROUGH OF SADDLE RIVER

BLOCK 1225



ELEVATIONS BASED ON AN ASSUMED DATUM

PROPERTY CORNERS NOT SET AS PER CONTRACT.

THIS SURVEY IS SUBJECT TO ANY FACTS THAT MAY BE DISCLOSED BY A FULL AND ACCURATE TITLE SEARCH.

PROPERTY SURVEY

CERTIFIED TO: SERGEY ANATOLIVICH.

PROPERTY SITUATED IN: BOROUGH OF UPPER SADDLE RIVER, BERGEN COUNTY, NEW JERSEY

LOT NO.: 12 (TAX MAP & FILE MAP)

BLOCK NO.: 1225 (TAX MAP) 16L (FILE MAP)

MAP SOURCE: "PART 2, SECTION No. 1, SUBDIVISION PLAT FOR DIMMIG ESTATES, BORO OF UPPER SADDLE RIVER, BERGEN Co. N.J." FILED IN THE BERGEN COUNTY CLERK'S OFFICE JANUARY 23, 1956 AS MAP No. 4931.

Christopher J. Lantelme, P.E. & L.S. 39580
LAND SURVEYOR

SCALE: 1" = 30'

DATE: 12/23/21

PARTY: DC/JP

DRAWN BY: DR

NO. 88DIMMIG